



# FOODHUB EXPRESS

---

Let's Move It Like A Pro!

Presented by

**ROSHINI P**

Date : 20 July 2018

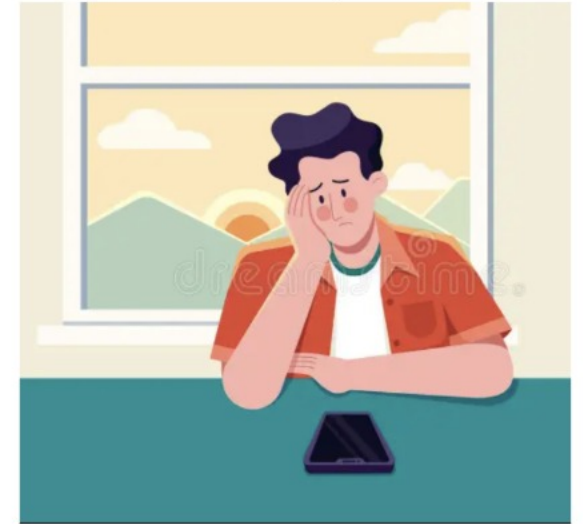
# PROBLEM STATEMENT

In today's fast-paced world, people often face challenges in efficiently managing their transportation needs, especially when it comes to picking up and dropping off items. Whether it's sending parcels to loved ones, delivering goods for businesses, or simply transporting personal belongings, individuals encounter various obstacles that hinder the process.

How can i deliver this parcel to him?



How will i receive the parcel from him?



# Challenges

---

These challenges include:

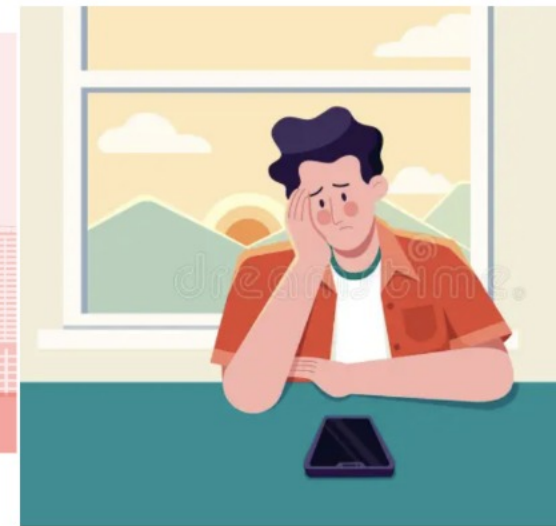
1. Time Constraints
2. Complexity and Inconvenience
3. Lack of Reliable and Affordable Solutions
4. Safety and Security Concerns
5. Environmental Impact

# PROPOSED SOLUTION

By implementing these Foodhub Express Delivery features and services, the pickup and drop service can offer a convenient, reliable, and efficient solution for transporting items, meeting the diverse needs of its users.

Get hassle-free pickup and drop services for your packages, parcels, and goods. Our reliable drivers ensure safe and timely delivery to your desired destination.

I will Help You !!!



## Potential Impact Of Solution By Users



1. Easy transit placement , Multiple Payment Methods
2. Convenience, Hygiene and Time Savings
3. Streamlined Operations for Businesses
4. Expanded Access to Transportation Services
5. Enhanced Safety and Security
6. Improved Quality of Life

# TARGET USER GROUPS



1. Individuals and Families
2. Small Business
3. Corporate Clients
4. Elderly or Disabled individuals
5. Tourists and travelers
6. Educational Institutions
7. Community organizations

# KEY FEATURES & FUNCTIONALITIES



Choosing Pick-up and Drop Points

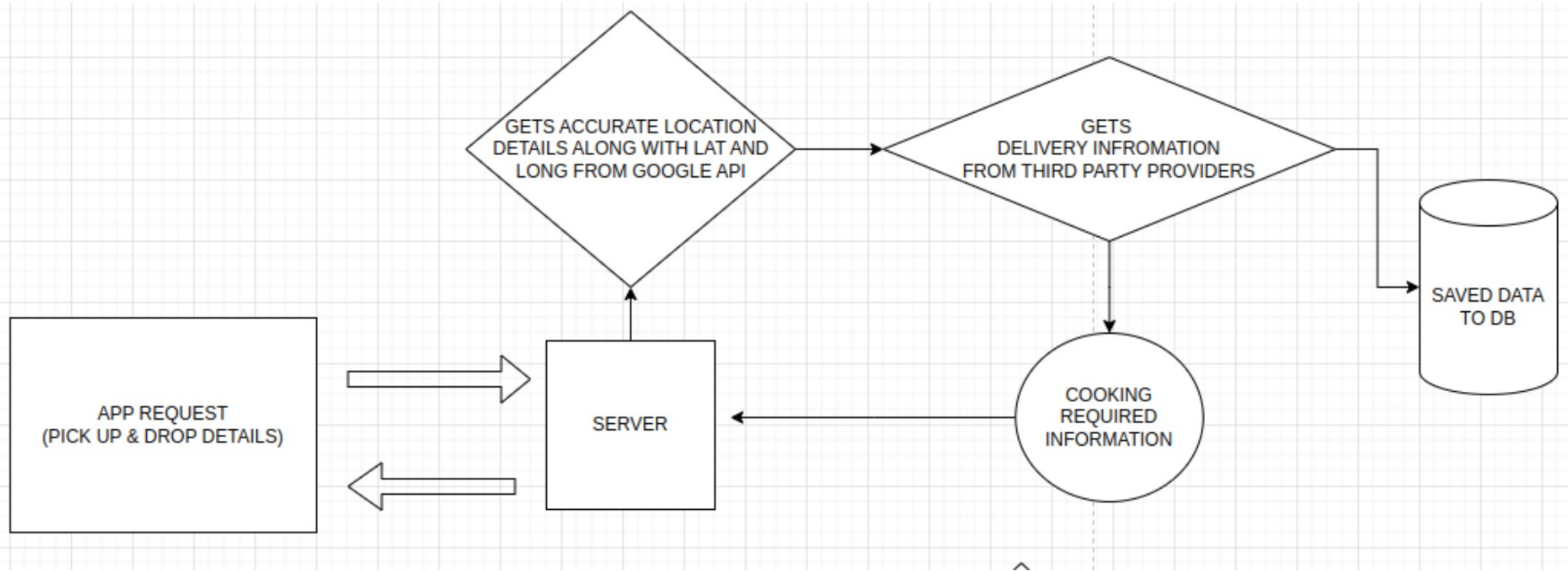
Accurate Location, Distance and Transit charge calculations

Transit Allocation

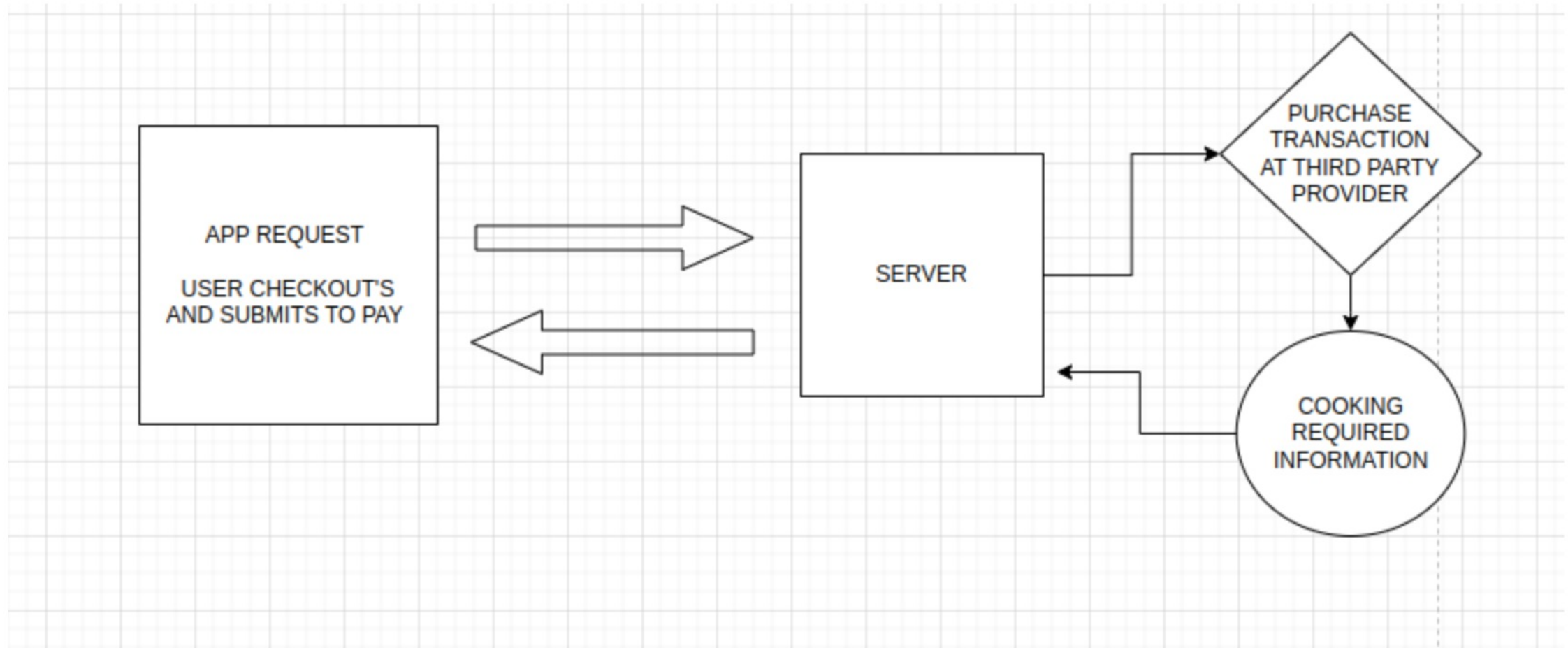
Payments

Map Tracking of Transit

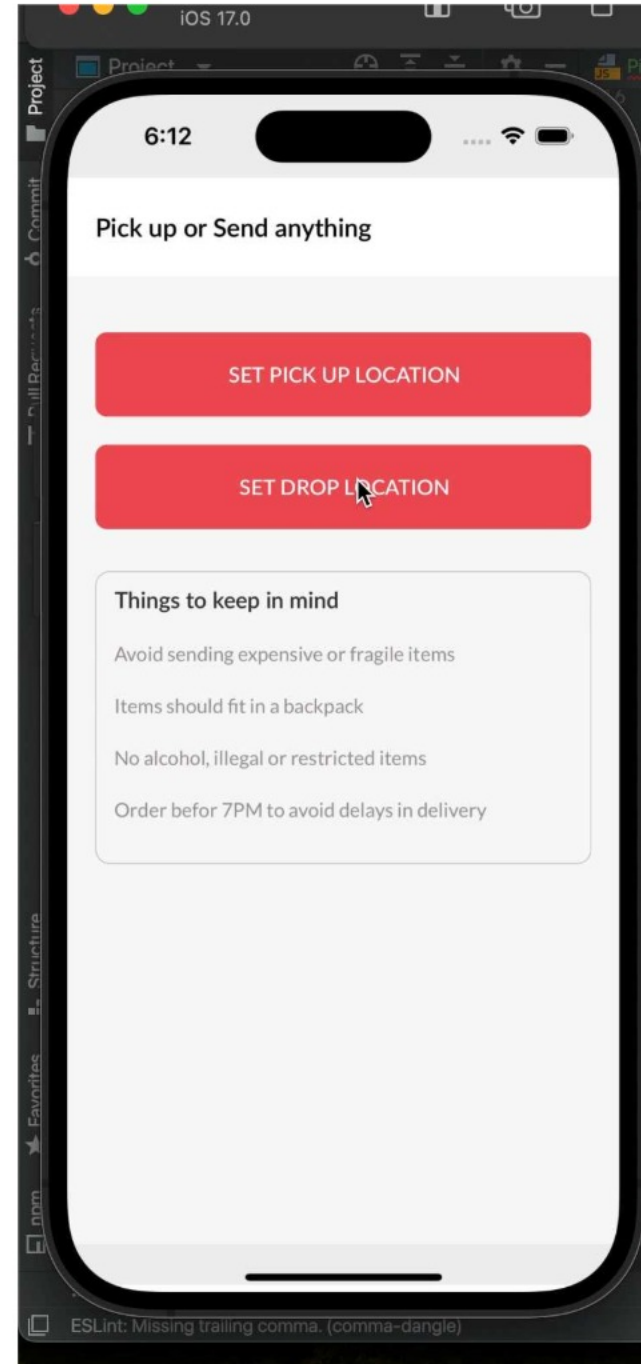
# ARCHITECTURE & FUNCTIONALITIES



# ARCHITECTURE & FUNCTIONALITIES



# PROTOTYPE WALKTHROUGH





**THANK YOU!**